



RFV 1000



technical specifications

Equipment Weights & Dimensions

Structure Weight	1,300 kg
Operating Weight	2,000 kg
Unit Length	1,712 mm
Unit Width	1,000 mm
Unit Height	2,060 mm
Footprint Area	1.172 m ²
Deck Loading	1,706 kg/m ²

Operating Flow Capacity

Maximum Flow Rate 2 x 1.2 m³/h

Pressure & Temperatures

Design Pressure 100 psi
 Design Temperature 0°C - 50°C

Vessels

Filter Vessel Size 14"
 Canister Size 11" x 11"
 Canister Quantity per Vessel 3
 Sock Quantity per Vessel 1

WATER TREATMENT

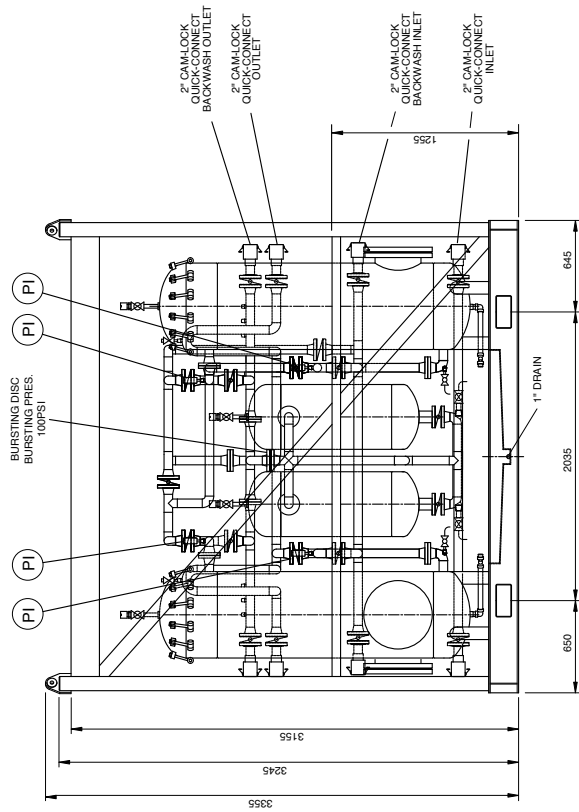


CETCO
OILFIELD
SERVICES
COMPANY

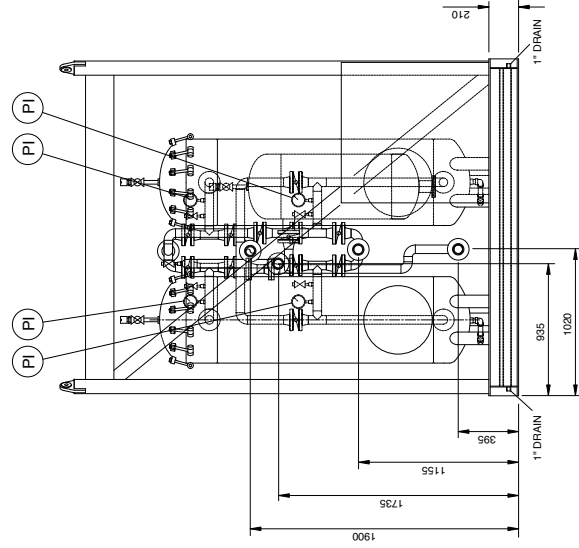
UK
 Malaysia
 Middle East
 Africa
 Australia

+44(0)1224 787340
 +603 216 206 95
 +968 245 80219
 +44(0)791 783 8316
 +61(0) 893 160122

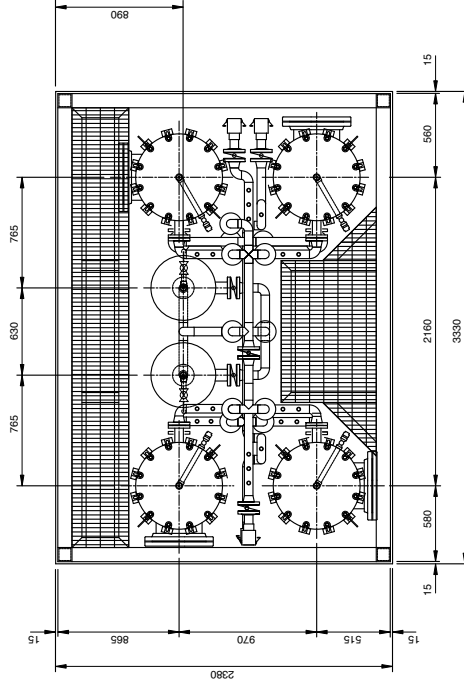
www.cetcooilfieldservices.com



ELEVATION ON SKID



END VIEW ON SKID



PLAN ON SKID

TAG NUMBER	SERVICE	18" SOCK FILTER x 2	TAG NUMBER	SERVICE	2000-11, 1b 1-4 24" FILTER VESSEL x 4
FLOW	m3/h		FLOW	m3/h	
I.D. x T.T.	mm		I.D. x T.T.	mm	
DESIGN PRESSURE	PSI	100	DESIGN PRESSURE	PSI	100
DESIGN TEMPERATURE	°C	0 TO 50	DESIGN TEMPERATURE	°C	0 TO 50
INSULATION	N/A		INSULATION	N/A	
FIRE PROTECTION	NONE		FIRE PROTECTION	NONE	
NUMBER OF ELEMENTS	4 x 3		NUMBER OF ELEMENTS	4 x 18	
SIZE OF ELEMENTS	7" x 20"		SIZE OF ELEMENTS	7" x 20"	

VESSEL CODE = PD 5500 CAT 3
 VESSEL DESIGN PRESSURE = 100PSI
 VESSEL DESIGN TEMP. = 0 TO 50°C
 SKID CODE = DNV CN 2.7.1

TARE WEIGHT = 3000 Kgs
 PAYLOAD = 7500 Kgs
 TOTAL GROSS WEIGHT = 10500 Kgs

CETCO SERIAL No:
3295-01

SKID MAWP:
100PSI @ 50°C

cetcooilfieldservices.com

This document is property of Colloid Environmental Technologies Company (CETCO) and contains confidential information belonging to CETCO. It is not to be reproduced, copied, disclosed, or used in any matter without the prior written consent of CETCO.

PROJECT NO.	ISSUED FOR APPROVAL	DATE	BY	CHK	APPR	NO.	DATE	REVISIONS
3295-01	ISSUED FOR APPROVAL							

RFV 2000 # 1
GENERAL ARRANGEMENT

SCALE	DATE	BY	CHK	APPR	NO.	DATE	REVISIONS
1:50							

