



# Dual Pod Filter Units Skid Mounted with Drip Pan

## technical specifications

### Equipment Weights & Dimensions

Dry Weight	2,100 lbs
Unit Length	2'7"
Unit Width	6'
Unit Height	6'

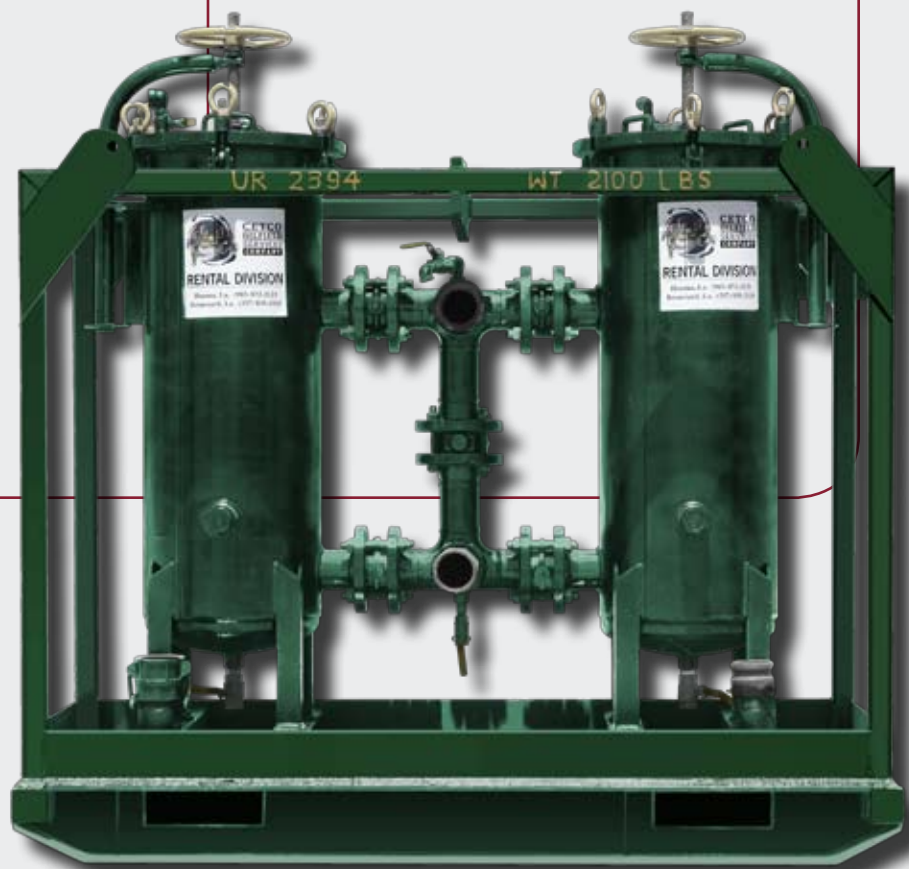
ASME U-Stamp

### Applications

- Animal Oils
- Concentrated Alkalies
- Dilute Acids & Alkalies
- Mineral Acids
- Organic Acids
- Solvents
- Oxidizing Agents
- Petroleum Oils
- Photo Solutions
- Vegetable Oils
- Water

### Equipment Specifications

- Maximum Flow Rate 285 GPM
- 3" Male Camlock on Outlet & Female Camlock on Inlet
- Each Pod Takes Nineteen 30" Cartridges



WATER TREATMENT | PIPELINE | WELL TESTING | WASTEWATER RENTALS | NITROGEN | COILED TUBING



**CETCO**  
**OILFIELD**  
**SERVICES**

Houma, Louisiana	985.872.2121
Broussard, Louisiana	337.839.2110
Houston, Texas	281.578.8911

[cetcooilfieldservices.com](http://cetcooilfieldservices.com)